

# Zenith Drawer Adjustments

It's recommended that you use a Double-Crosstip (PZ) Screwdriver CR PZ 2x100. [Click here for the full adjustments video](#). To complete this, you must slide the metal side covers to expose the adjustment hardware.

## Drawer Front Removal (Small)



- Gently slide back the metal side covers to expose the adjustment hardware.
- Turn this screw clockwise and the cabinet drawer front will extend away from the glides/slides.
- Hold the front from both sides and pull it away from the profiles to remove it.

## Drawer Front Removal (Tall)



- This requires loosening two screws on both sides of the drawer.
- First, turn the top screw clockwise (large, curved channel) that moves towards the inside of the drawer.
- Second, turn the bottom screw clockwise (smaller, curved channel) that moves towards the drawer front.

## Drawer Front Height Adjustment (Up & Down) (+/- 2 mm)



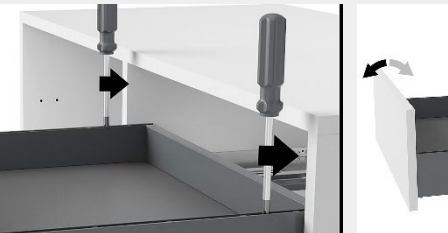
- Turn this larger screw to the left or right to achieve the desired placement.
- Complete this on both sides of the drawer.

## Drawer Front Adjustment (Left & Right) (+/- 1.5 mm)



- Turn this smaller screw to the left or right to achieve the desired placement.
- Complete this on both sides of the drawer.

## Drawer Box Tilt Adjustment (In & Out)



- Carefully remove the lighting track or design profile (if relevant).
- Turn these back screws simultaneously in the same direction to the left or right to achieve the desired placement.

Proudly Canadian since 1980

[www.superiorcabinets.ca](http://www.superiorcabinets.ca) | .us

 **SUPERIOR**  
CABINETS