

# Aventos HS Adjustments

AVENTOS HS components are easy to assemble and quick to adjust. Once the lift mechanism has been precisely adjusted to the weight and size of the front, AVENTOS HS will open, close and hold with reliable ease. Protruding parts can be removed to facilitate transportation.



Proudly Manufactured in Western Canada since 1980

 **SUPERIOR**  
CABINETS

# Aventos HS Variable Stop

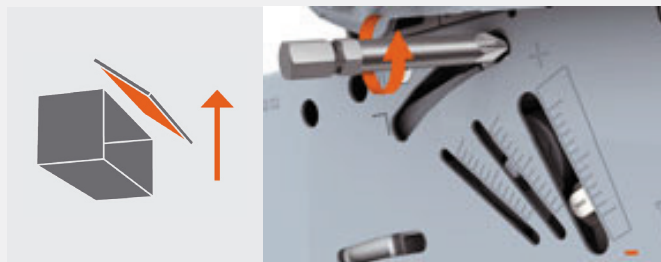
AVENTOS HS components are easy to assemble and quick to adjust. Once the lift mechanism has been precisely adjusted to the weight and size of the front, AVENTOS HS will open, close and hold with reliable ease. Protruding parts can be removed to facilitate transportation.



## 1. VARIABLE STOP.

Adjust the lift mechanism using a cordless drill so that the lift system remains in any desired position when opening.

a. if the lift system rises when you let go...



b. if the lift system falls when you let go...



To adjust the lift mechanism to the respective door weight, always use a cordless drill (bit Pozidriv® cross slot size 2, 39 mm).

# Aventos HS Gap Alignment

AVENTOS HS components are easy to assemble and quick to adjust. Once the lift mechanism has been precisely adjusted to the weight and size of the front, AVENTOS HS will open, close and hold with reliable ease. Protruding parts can be removed to facilitate transportation.



## 2. GAP ALIGNMENT:

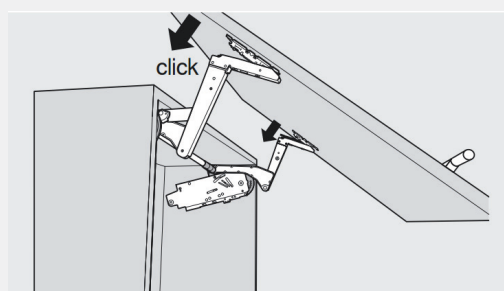
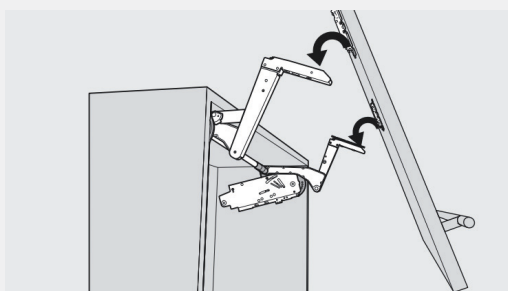
The lever arm allows all 3 dimensions to be adjusted using a Phillips screwdriver.



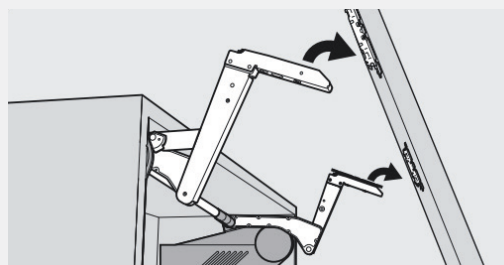
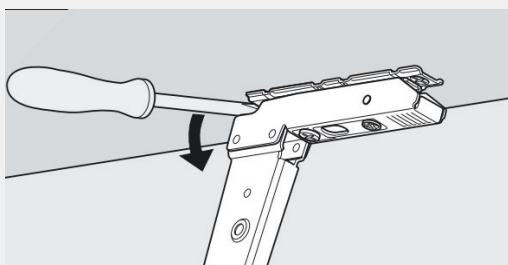
# Aventos HS Adjustments

AVENTOS HS components are easy to assemble and quick to adjust. Once the lift mechanism has been precisely adjusted to the weight and size of the front, AVENTOS HS will open, close and hold with reliable ease. Protruding parts can be removed to facilitate transportation.

## DOOR ATTACHMENT:



## DOOR REMOVAL:



## TENSION ADJUSTMENT:

